



Hi-cast Co., Ltd.



Hi-cast Co., Ltd.



Hi-cast Co., Ltd.

Hi-cast Co., Ltd.

Hi-cast Co., Ltd.

Hi-cast Co., Ltd.



Hi-cast Co., Ltd.

Hi-cast Co., Ltd.



Hi-cast Co., Ltd.

Hi-cast Co., Ltd.

## Top message



President

Kentaro Takahashi

Our company is known for having been passed down through generations with one valuable asset. That is a "heart to cherish the people". It is not misled by the pros and cons of short-term but paying respect to the duty and obligations with the motto of "harmony" as what we have been taking effort so far.

And now, in the current epoch of information society, we always keep ourselves penetrating with the thoughts from the predecessors. In addition, with our wishes to cherish the people, we have tried our best to achieve improvement so as to suite with the customers of such era.

From now on, We will continue to innovate speedily in order to anticipate and satisfy customer requirements.

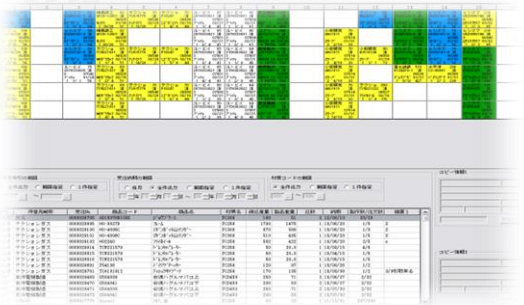
## Young vitality and history of 100 years

The background of one century in casting. The technology, achievement and reliability that we have obtained over years supported by the young vitality with average age in early 30s. All this has created our wealth of experience as well as vibrant spirit to confront challenge that is considered the biggest attraction of our brand as Hi-cast.



## Self-developed Production Management System

We have been developing a Production Management System in conjunction with Hi-Cast production line. This is linked to modules of sales management and quality control and thus help to perform production of diversified products in limited quantities quickly and accurately.



### ● Main features

1. Since the confirmation of the process can be easily performed to understand the progress, it is possible for anyone to know the completion date of concerned processing products.
2. History of defects and work caution points are clearly specified in the work card and this has helped to reduce the defect effectively.
3. Inspection articles are also specified clearly in the shipping inspection list so that omission of important checkpoints can be prevented.
4. As being in conjunction with the pouring history, traceability is possible.
5. As being linked to sales management, the tasks of request and payment can be performed.
6. Since the storage location and history of use is clearly determined, good storage condition of the molds is secured.
7. By being able to verify any data, such as planning and actual performance, improvement activities have been performed accordingly.

## Quality assurance system corresponding to the critical safety parts



Perform essential inspection as visual appearance and dimensional inspection as well as other necessary testings and inspections such as Ultrasonic testing, Magnetic particle testing, Liquid penetrant testing, Radiographic testing, Scribing inspection, Hardness measurement, Mechanical properties test, Microstructure testing, Spectroscopic analysis...In addition, in order to build up a system for manufacturing products of stable quality, we have obtained the certification of Quality Management System (ISO9001 2008).

## Description of business

### ● Products made in-house

Material (Grade)	Handling weight
gray cast iron (FC150, FC250, FC300, FC350)	1~1,500kg
spherical graphite cast iron (FCD450, FCD600)	1~1,500kg

### ● Consignment products

- Iron casting      Depend on the size and additional situation, we shall take the cooperation with other companies that are specialized in the same business.
- Non-ferrous castings
- Casting by special material
- Manufacturing of foundry molds
- Manufacturing casting machine
- Shot blast and heat treatment of the casting
- Surface treatment of plating or treatment of plating or

★If you may have any enquiry or anything concerned to casting please feel free to contact us.

### ● Example of products

Marine parts



Die-cast parts



Construction machinery parts



Cut-off machine parts



Railroad part



Hydraulic component



Injection molding machine



Part for semi-conductor manufacturing apparatus





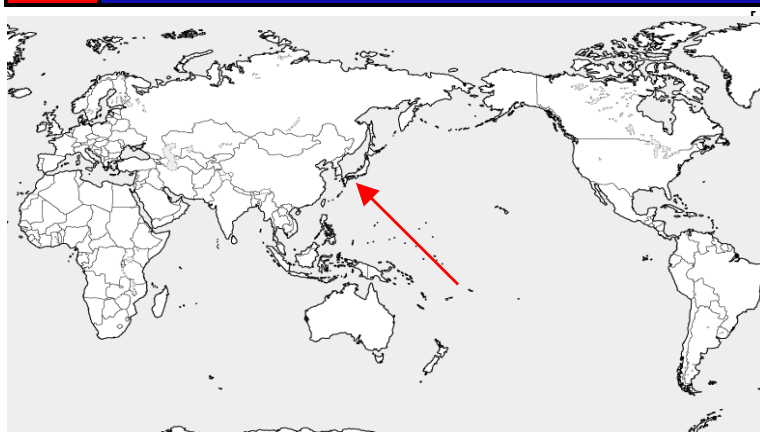
## Corporate Profile

Company name	Hi-cast Co., Ltd.
Representative	Kentaro Takahashi
Address	<p>■ Headquarters / 〒 173-0014 Itabashi-ku, Tokyo Oyamahigashi 38-8</p> <p>■ Hanyu factory / 〒 348-0038 Saitama Prefecture Hanyu</p>
URL	<a href="http://www.hicast.jp">http://www.hicast.jp</a>
Facebook	<a href="http://www.facebook.com/hicast1916">http://www.facebook.com/hicast1916</a>
E-MAIL	info@hicast.jp
Business lines	<p>Manufacture and sale of castings</p> <p>【Main products】</p> <p>Injection molding machine parts, machine tool parts, die-cast Semiconductor manufacturing equipment parts, LCD Iron castings of bearing parts, mold, such as processing jigs</p>
Capital	18,000,000 ¥
Date of establishment	June 1916
Employee	35 employees
Main customer	<p>Kyosan Electric Mfg. Co., Ltd, Kosaka Laboratory Ltd., Toshiba machine Co.Ltd., Toyo Electric Mfg Co, Ltd, Hitachi Nico Transmission Co., Ltd, Bosch Rexroth Co., Ltd,</p>
Correspondent bank	Bank of Tokyo-Mitsubishi UFJ, Ltd., Seongbuk credit union;

## Corporate history

June 1916	At the current headquarters, first president Takahashi
November 1923	Second generations Ito Takahashi inheritance
April 1933	Third generations Kimutsugi Takahashi inheritance
April 1945	The factory burned down by war
August 1945	Factory reconstruction
July 1948	"Takahashi casting Co., Ltd." established - Capital:1,500,000 JPY
August 1959	Shimura factory inaugurated
January 1990	Capital increased up to 18,000,000 JPY
January 1992	Fourth generation Masatoshi Takahashi inheritance
March 1993	Changed company name to [Hi-Cast Corporation]
April 1993	Hanyu factory inauguration, Shimura factory closed
June 2001	Hanyu factory new administration building completed
November 2001	Hanyu factory cast iron plant extension work completed
November 2004	Experiment & testing plant expansion
April 2005	Tent warehouse building
July 2006	Core factory expansion
December 2009	Achieved DNV certification
January 2010	Fifth generation Kentaro Takahashi inheritance
January 2010	Analysis center office completed
October 2011	Achieved Eco-Action 21 certification
September 2012	Indicated Sai-no-Kuni factory
January 2013	Laboratory completion
August 2013	Achieved ISO 9001 certification

## MAP



Address]  
705-34 Hanyu Komatsudai Saitama Prefecture Japan

by train]  
about 5 minutes by taxi from the Hanyu hub station  
of Tobu Isesaki Line, Or, 30-minute walk

by car]  
about 10 minutes from Hanyu IC of the Tohoku  
Expressway

